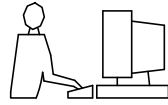


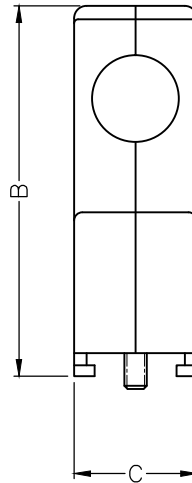
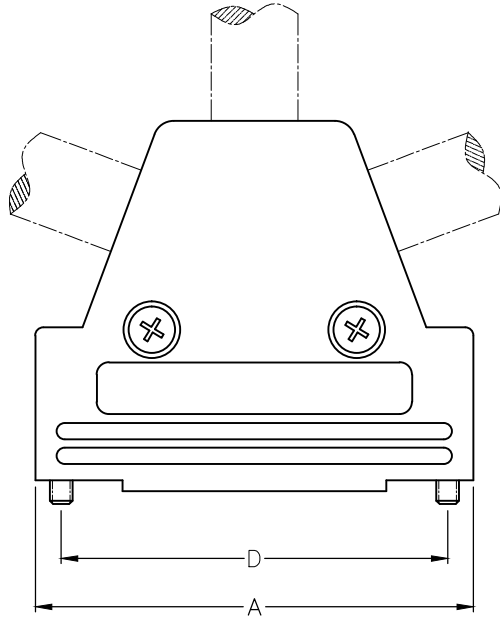
THIS IS A C.A.D. GENERATED DRAWING
DO NOT MAKE MANUAL REVISIONS TO MASTER.



* UNLESS OTHERWISE SPECIFIED TOLERANCES
ON DECIMAL IS: ANGLE ±1°
UNIT: MM

BACKSHELL KIT INCLUDES:

- (2)BACKSHELL HALVES
- (2)JACKSCREW 4-40
- (2)SHELL SCREW
- (2)METAL CLAMP
- (4)CLAMP SCREW
- (2)BLANKING PLATE



DIMENSIONS(mm/in)				
Size	A ^{±1.30 ±0.051}	B ^{±1.30 ±0.051}	C ^{±1.20 ±0.047}	D ^{±0.25 ±0.01}
9	31.00	41.40	15.00	24.99
	1.221	1.630	0.591	0.984
15	40.30	45.20	15.00	33.32
	1.587	1.780	0.591	1.312
25	53.50	45.20	15.00	47.04
	2.106	1.780	0.591	1.852
37	70.00	45.20	15.00	63.50
	2.756	1.780	0.591	2.500

ORDERING INFORMATION:

SIZE	P/N-KITTED	PRODUCT CODE
9-WAY	6550-0101-01	MHTRI-P-09-K
15-WAY	6550-0101-02	MHTRI-P-15-K
25-WAY	6550-0101-03	MHTRI-P-25-K
37-WAY	6550-0101-04	MHTRI-P-37-K

BACKSHELL MATERIAL:

ABS UL 94-HB RATED

JACKSCREW 4-40:

STEEL -BLACK OXIDE FINISH

SHELL SCREW:

STEEL -BLACK OXIDE FINISH

METAL CLAMP:

STEEL -ZINC PLATED

CLAMP SCREW:

STEEL -ZINC PLATED

BLANKING PLATE:

ABS UL 94-HB RATED

OPERATING TEMP:

-55°C TO +120°C

THESE DRAWINGS AND SPECIFICATIONS ARE THE PROPERTY OF MH CONNECTORS AND SHALL NOT BE REPRODUCED, COPIED OR USED AS THE BASIS FOR THE MANUFACTURE OR SALE OF APPARATUS WITHOUT WRITTEN PERMISSION.

DRAWN
Johnny
DATE
11-24-15

APPROVED
Victor Lin
DATE
11-24-15

SCALE
1 : 1
SHEET OF
1 OF 1
REV:
2.0

DRAWING No
MHTRI-P-SERIES



THIS SERIES FULLY CONFORMS TO THE EUROPEAN UNION DIRECTIVES 2002/95/EC AND 2002/96/EC FOR RoHS COMPLIANCY.



**MH CONNECTORS ,
DIVISION OF EDAC**